



# GAT MONTHLY MEMBERSHIP PROGRESS REPORT

Results as of: 3/31/2023

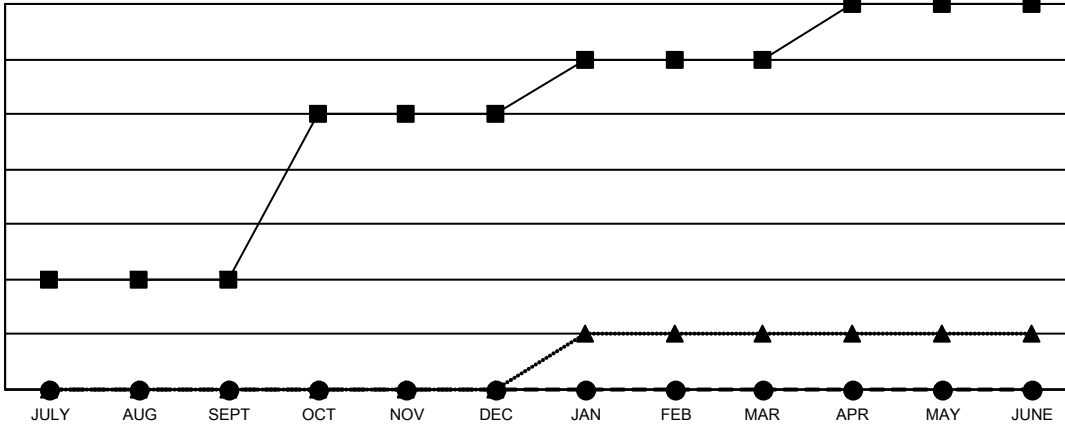
Multiple District 25

LOCATION: INDIANA

Clubs			
RESULTS FOR 2022-2023			
QUARTER	NEW CLUB GOAL	NEW CLUBS	DROPPED CLUBS
JULY/AUG/SEPT	2	0	2
OCT/NOV/DEC	3	0	6
JAN/FEB/MAR	1	0	0
APR/MAY/JUNE	1	0	0

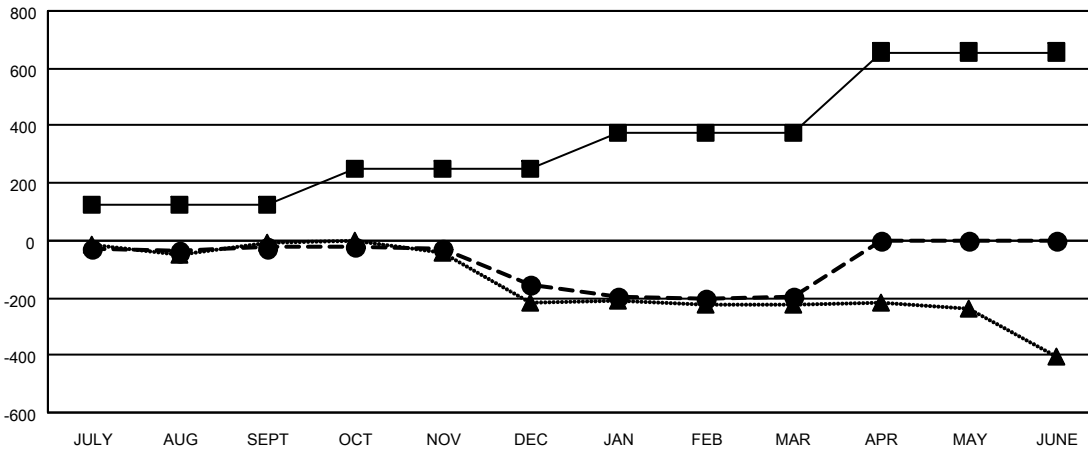
Members			
RESULTS FOR 2022-2023			
QUARTER	MEMBER GROWTH NET GOAL	MEMBER GROWTH ACTUAL	DROPPED MEMBERS ACTUAL (including transfers)
JULY/AUG/SEPT	125	231	191
OCT/NOV/DEC	126	131	251
JAN/FEB/MAR	127	181	192
APR/MAY/JUNE	279	0	0

GOALS AND ACTUAL NEW CLUBS CUMULATIVE



- CURRENT YEAR GOALS FOR NEW CLUBS
- CURRENT YEAR ACTUAL NEW CLUBS
- ▲- LAST YEAR ACTUAL NEW CLUBS

GOALS AND ACTUAL MEMBERS CUMULATIVE



- MEMBER GROWTH NET GOAL
- MEMBER GROWTH ACTUAL
- ▲- LAST YEAR MEMBERSHIP ACTUAL

<b>DROPPED CLUBS: 8</b>	
<b>DROPPED MEMBERS</b>	
DECEASED	142
CLUB CANCELLED	52
OTHER	440
<b>TOTAL</b>	<b>634</b>

152 CLUBS OF 345 ADDED 1 OR MORE NEW MEMBERS

[CLICK HERE FOR CUMULATIVE MEMBERSHIP DATA](#)

GENDER DISTRIBUTION	
MALE	5,737 (68.33%)
FEMALE	2,654 (31.61%)
NON BINARY	0 (0.00%)
PREFER NOT TO ANSWER	5 (0.06%)
<b>TOTAL FAMILY UNIT MEMBERS</b>	<b>2,084</b>
<b>FAMILY MEMBERS PAYING HALF DUES</b>	<b>1,067</b>